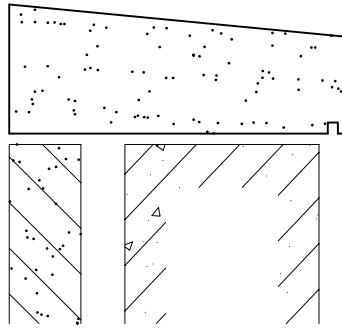
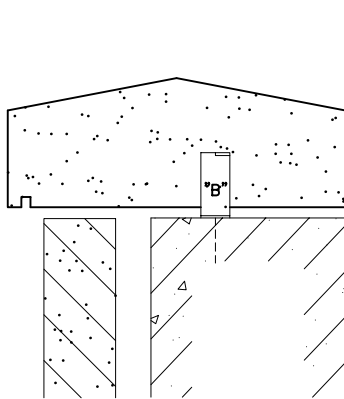


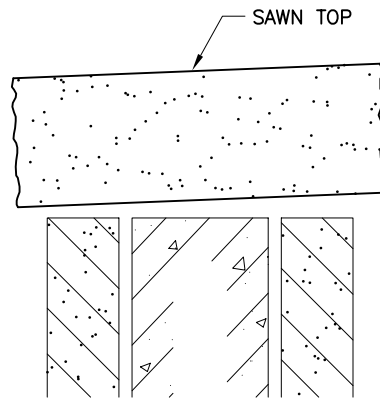
SINGLE WASH COPING WITH FLASHING REGLET. FLUSH ON BOTH SIDES.



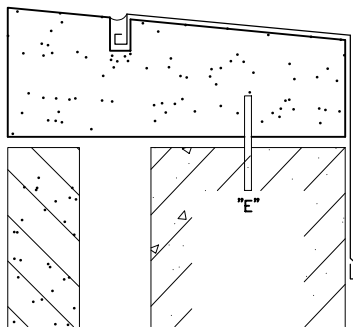
SINGLE WASH COPING WITH DRIP ON THE INSIDE.



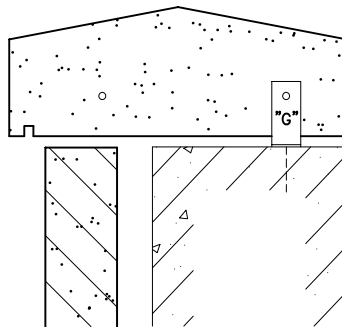
DOUBLE WASH COPING WITH DRIP ON THE OUTSIDE.



SPLITFACE COPING WITH OVERHANG ON BOTH SIDES. SLOPED SETTING BED.



COPING WITH PIN ("E")



COPING WITH PIN STRAP ("G") & HORIZONTAL ALIGNMENT DOWEL.

COPING NOTES:

MKS IS A CUSTOM FABRICATOR AND CAN PROVIDE COPINGS IN A VARIETY OF SIZES AND SHAPES.

ANCHOR SLOTS OR HOLES AND/OR REGLETS MAY BE CUT IN ANY SURFACE ALONG WITH RECOMMENDED DRIPS AT OVERHANGS (STANDARD $\frac{1}{4}$ " x $\frac{1}{4}$ ".)

PROPER FLASHING AND SEALANT AT JOINTS ARE ESSENTIAL TO PREVENT MOISTURE PENETRATION, DETAILING PER ARCHITECTURAL DRAWINGS AND SPECIFICATIONS. SEAL FLASHING AT ANY LOCATIONS A DOWEL OR ANCHOR WILL PEIRCE THE FLASHING.

MOST COMMON METHOD OF ANCHORAGE FOR COPING ARE PIN ANCHORS "E, G, 10" AND STRAP ANCHORS "A, B, C." A HORIZONTAL ALIGNMENT DOWEL IS USED OCCASIONALLY TO HELP PREVENT SHIFTING DURING BUILDING EXPANSION AND CONTRACTION.

